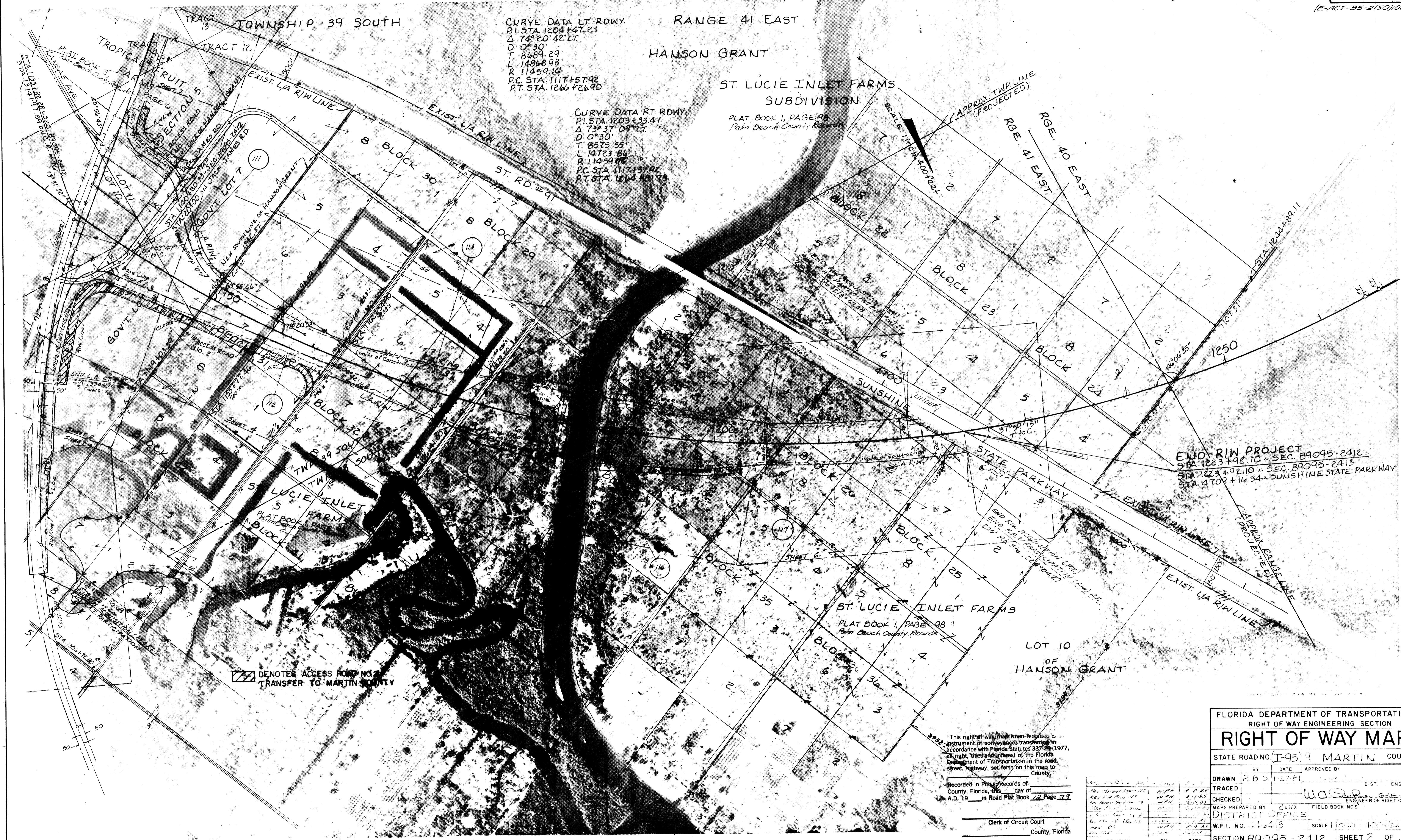


CURVE DATA LT. RDWY.
 P.I. STA. 1204+47.21
 $\Delta 74^{\circ}20'42''$ LT.
 D. $0^{\circ}30'$
 T. 8689.29'
 L. 14868.98'
 R. 11459.16'
 P.C. STA. 1117+57.92
 P.T. STA. 1266+26.90

CURVE DATA RT. RDWY.
 P.I. STA. 1203+33.47
 $\Delta 73^{\circ}37'09''$ LT.
 D. $0^{\circ}30'$
 T. 8575.55'
 L. 14723.86'
 R. 11459.16'
 P.C. STA. 1117+57.92
 P.T. STA. 1266+26.90

ST. LUCIE INLET FARMS
 SUBDIVISION
 PLAT BOOK 1, PAGE 98
 Palm Beach County Records



□ DENOTES ACCESS ROAD NOT TRANSFER TO MARTIN COUNTY

END RIW PROJECT
 STA. 1223+92.10 ~ SEC. 89095-2412
 STA. 1223+92.10 ~ SEC. 89095-2413
 STA. 2+00 + 16.34 ~ SUNSHINE STATE PARKWAY

"This right of way, when recorded in an instrument of conveyance, transferring in accordance with Florida Statutes 337.29 (1977), all right, title and interest of the Florida Department of Transportation in the road, street, highway, set forth on this map to County."

Recorded in Public Records of County, Florida, this day of A.D. 19 in Road Plat Book 72 Page 77

Clerk of Circuit Court
 County, Florida

FLORIDA DEPARTMENT OF TRANSPORTATION
 RIGHT OF WAY ENGINEERING SECTION

RIGHT OF WAY MAP

STATE ROAD NO. 1-95-3 MARTIN COUNTY

BY DATE APPROVED BY DATE

DRAWN R.B.S. 1-27-81 DIST. ENGINEER

TRACED W.A.S. 6-15-82 ENGINEER OF RIGHT OF WAY

CHECKED DISTRICT OFFICE

MAPS PREPARED BY SUB. FIELD BOOK NO'S

W.P.I. NO. 1-2413 SCALE 1 inch = 40 feet

SECTION 89095-2412 SHEET 2 OF 6

REVISION	BY	DATE

SHEET 2 OF 6 FOR ROAD TRANSFER PURPOSES